

**INSTRUCTIONS TO AUTHORS**  
JURNAL PENGOLAHAN HASIL PERIKANAN INDONESIA (JPHPI)  
Indonesian Journal of Aquatic Product Technology

**GENERAL INFORMATION**

1. Manuscripts must be original, have not been published previously in any scientific journal, not being submitted for publication elsewhere, and will not be submitted to any media during the review process, unless the author have officially withdrawn the manuscripts from JPHPI. The statement must be stated in a statement of originality and copyright release form.
2. Manuscripts submitted are research article or review which have no conflict with bioethical research.
3. Manuscripts encompass a broad range of research topics in biochemical of fisheries, biotechnology of fisheries, food processing, characteristic of raw materials, and quality of aquatic products.
4. The journal is published 3 (three) times a year, i.e April, August, and December.
5. If authors have any suggestions for 3 (three) peer-reviewers, please write the name, institution, and email.

**MANUSCRIPT FILE**

1. Manuscript is written in Bahasa Indonesia or English and use standard scientific usage.
2. Manuscript should be prepared in Microsoft Office Word format (.doc), except for Graphs using Microsoft Excel program and Figures using JPEG, TIF, or PDF.
3. Manuscript should be typed using Times New Roman fonts at 12 points.
4. Manuscript should be typed double-spaced except for Title, Tables, Title of Graphs/Figures, and appendices are single spaced. Manuscript is prepared in A4 paper, and margin on all four sides are 2.5 cm.
5. Tables, Graphs, and Figures should be placed after References of the manuscript.
6. Line and page numbers are added.
7. Manuscript content should be arranged as the following order: Title, Name of the author(s), their institutions and email, Abstract, Introduction, Materials and Methods, Results and Discussion, Conclusion, Acknowledgment (if any), References.
8. Manuscript should be submitted electronically through online system: <http://journal.ipb.ac.id/index/php/jphpi>  
Authors are unable to submit electronically could send the files to:  
[jurnalpengolahan@yahoo.com](mailto:jurnalpengolahan@yahoo.com)

**CONTENT OF MANUSCRIPT**

1. **Title** must be brief, accurate, clear, specific and informative which reflect the article content. The length of the title is maximum 20 words. Each word of the title should be capitalized letter and 14 pt bold Times New Roman and be centered.
2. **Name of author(s)** are written as for references, without title and professional positions such as Prof, Dr, MSc, MS, Manager, etc. Name of author(s) should be in 12 pt Times New Roman bold. Do not abbreviate your last/family name. Always give your First and Last names.
3. **Name of institution(s)** must be accompanied with full address, telephone number, and e-mail. Please indicate Corresponding Author (include email address) by adding asterisk (\*) in superscript behind the name with arabic number. Name of institution(s) should be in 11 pt Times New Roman .
4. **Abstract** must be written in Bahasa and English, in single paragraph and not more than 250 words (for non Bahasa speakers, please contact editor). Abstract contains clear statement of the objective, methods, results, and conclusion. Abstract should be in 10 pt with 1 pts space below.
5. **Key words** should be written in not more than 5 (five) words and listed alphabetically.
6. **Introduction** describes the background and objective (position at the end of introduction section); it should be written efficiently and supported by references. Introduction also illustrates state of the arts of the research.
7. **Materials and Methods** should be written clearly and completely, especially for materials, procedures, experimental design, and data analysis; so they can be repeated by other researchers. Authors should state clearly information of commercial product and equipment used in the research, such as commercial name, product specification, and country. For the chemicals, please provide details of brand, purity, city, and country (i.e.  $H_3BO_4$  2% (Merck, Darmstad, Germany)).
8. **Results and Discussion** contain experimental obtained results, brief discussion regarding the investigated problems, and supporting references. Results and Discussion should be written collectively. They should not be separated.
9. **Conclusion** should be written briefly in single paragraph and reflecting the answer of research

purpose.

10. **Acknowledgement** (if any) to person(s) or institution(s) who help or support the experiment should be stated.

11. **References**

- a. References should have minimum 80% of journals.
- b. Citing a citation, such as Morris in Miftah *et al.* (2008), and using 'Anonym' as reference are not allowed.
- c. The electronic publications are only allowed to use, if those are published by a competent source, such as journal and government or private institution, and the accessed date should be put after the last sentence.
- d. References should be listed alphabetically by the author(s) last name(s) and the year of publication.

**For journals:** author(s), year, title of the article(s), journal name, volume and number of publication, and pages. Journals should be abbreviated according to the conventional abbreviation used by Pubmed ([ftp://ftp.ncbi.nih.gov/pubmed/J\\_Entrez.txt](ftp://ftp.ncbi.nih.gov/pubmed/J_Entrez.txt)). Example,

Nurhayati T, Rusyadi S, Suwandi R, Nugraha R. 2013. Purification and characterization of a cathepsin inhibitor from catfish (*Pangasius sp.*) of Indonesiaan water. *International Food Research Journal* 20(2):941-946.

**For books:** the order is author(s), year, title of the book, name and place of publisher. Example, AOAC. 2005. Official Methods of Analysis of AOAC International. 18th ed. Assoc. Off. Anal. Chem., Arlington.

**For article in a book:** author(s), year, title of the article, editor(s), book title, name and place of publisher. Example,

Rasmussen RS, Morrissey MT. 2008. Chitin and chitosan. Di dalam: Barrow C, Sahidi F (editor) *Marine Nutraceuticals and Functional Foods*. London (NY):

CRC Press.

Electronic Publications

Capelli B, Cysewski GR. 2010. Potential health benefits of *Spirulina* microalgae. A review of the existing literature. Cyanotech Corporation. Hawaii, 96740. Retrieved on August 10, 2014 from website: [www.cyanotech.com](http://www.cyanotech.com).

**TABLES, FIGURES, AND GRAPHS**

**1. Tables:**

- a. Tables should be prepared using Microsoft Word Table function, select Insert>Table and follow the instruction. Please do not separate cells into rows and columns by using tabs and spaces. Here with a sample table constructed correctly:
- b. Tables should be clear and stand alone (giving a complete information although without text).
- c. The title should be brief and clear. Only the initial word is capitalized, typed above the table, and numbered with Arabic style.
- d. Separating lines should be made horizontal (three lines) to separate head of column (treatment) and data, and closing line.
- e. Data should be completed with standard deviation (SD), standard error (SE), or coefficient of variation (CV) to figure out its variation.
- f. Footnote for statistical analysis should be written: "Means in the same column/row with different superscript differ significantly ( $p < 0.05$ ) or ( $p < 0.01$ )".
- g. Each abbreviation or symbols should be described in footnote.
- h. The maximum of table is five (5).

**2. Figures and Graphs**

- a. Title should be brief and clear, located under the Figures or Graphs. Only the initial word is capitalized and numbered with Arabic style.
- b. Symbols and description of Figure and Graph should be defined in title.
- c. Figure and Graph must have good resolution.
- d. Bar charts should be made in 2-dimension

Table 1 The growth rate of probiotic bacteria on different carbon source media treatment

Isolates	Growth Rate of Bacteria (OD/hours)		
	Fructose	Glucose	Molase
<i>Bacillus subtilis</i> C2	0.037±0.0014 <sup>a</sup>	0.047±0.0063 <sup>b</sup>	0.050±0.0048 <sup>b</sup>
<i>Bacillus firmus</i> C11	0.040±0.0013 <sup>a</sup>	0.049±0.0057 <sup>b</sup>	0.052±0.0052 <sup>b</sup>
<i>Bacillus flexus</i> C13	0.014±0.0017 <sup>a</sup>	0.049±0.0010 <sup>c</sup>	0.046±0.0008 <sup>b</sup>
<i>Bacillus flexus</i> C14	0.043 ±0.0091 <sup>a</sup>	0,046±0.0076 <sup>a</sup>	0.053±0.0063 <sup>a</sup>

Note: The average of ± standard deviation, Italic letters on the same value in the same row are not significantly different at  $p > 0.05$ .

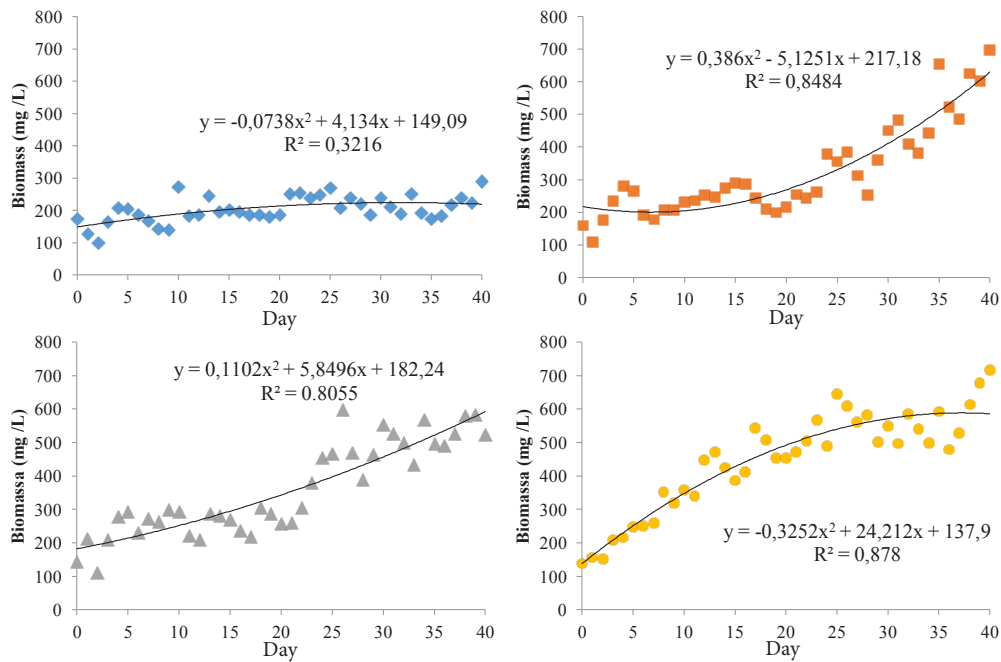


Figure 1 Biomass concentration *P. cruentum* for 40 days. Photoperiods ◆ 06:12; ■ 12:12; ▲ 18:06; ● 24:0.

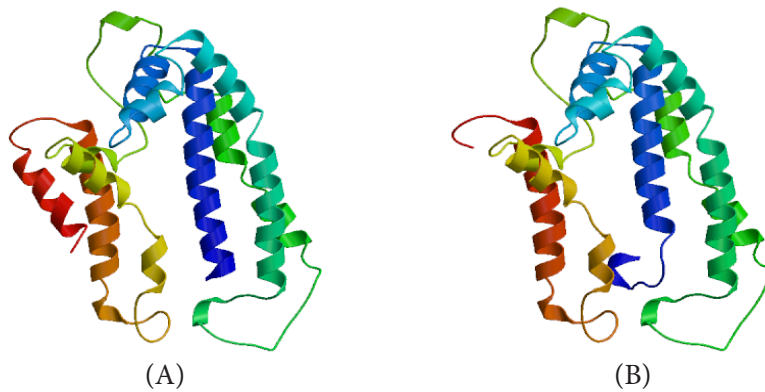


Figure 2 (A) 3D modelling of cyt b *Scomberomorus commerson*; (B) 3D modelling of cyt b *Scomberomorus koreanus*

in the simplest shading, not a solid or block shading.

e. The maximum of Figure and Graph is five (5).

#### ADDITIONAL NOTES

1. Unit of measurements use International System (IS).

2. Some abbreviations are written as follows:

°C degree Celsius

ANOVA analysis of variance

ATP adenosine triphosphate

cal calorie

cfu colony-forming unit

CoA coenzyme A

CP crude protein ( $N \times 6.25$ )

CV coefficient of variation

d day(s)

DM dry matter

DNA

EDTA

F

g

h

ha

HPLC

IC<sub>50</sub>

IU

mL

LD<sub>50</sub>

LSD

m

min

mo

n

deoxyribonucleic acid

ethylenediaminetetraacetic acid

F-distribution (variance ratio)

gram

hour(s)

hectare

high-performance (pressure) liquid

chromatography

inhibitory concentration 50%

international unit

mili liter

lethal dose 50%

least significant difference

meter

minute(s)

month(s)

sample size (used parenthetically or in footnotes)

<i>p</i>	probability
RNA	ribonucleic acid
rpm	revolutions/minute (not to be used to indicate centrifugal force)
s	second(s)
SAS	Statistical Analysis System
SD	standard deviation (sample)
SE	standard error
sp.	species
ssp.	subspecies
t	t- (or Student) distribution
TMAO	trimethyl amine oxide
TPC	total plate count
TVB	total volatile base
TVN	total volatile nitrogen
UV	ultraviolet
VFA	volatile fatty acid(s)
vol	volume
vol/vol	volume/volume (used only in parentheses)
vs.	versus
wk	week(s)
wt	weight (use only in tables, not in the text)
yr	year(s)

#### 5. Heading

- a. Heading should be written in capital letters, bold, centered, and include:

**ABSTRACT**  
**INTRODUCTION**  
**MATERIALS AND METHODS**  
**RESULTS AND DISCUSSION**  
**CONCLUSION**  
**ACKNOWLEDGEMENT**  
**REFERENCES**

- b. Sub-heading, the first letter for each word should be capitalized, align left, and bold.
- c. Sub-sub-heading, only the first word should be capitalized, written at the beginning of the paragraph, bold, and followed by full stop.

#### MANUSCRIPT PUBLICATION

1. Suitability of manuscript for publication is judged by the reviewers and editorial board.
2. Author(s) must revise the manuscript as suggested by reviewers and editorial board.
3. All the review processes are conducted in blind review.
4. Reprints of all manuscripts will be provided to the corresponding author and should be read carefully and checked against the typed manuscript. Corrections may be returned soon.
5. Copy right of article(s) published is held by JPHPI.

#### MANUSCRIPT SUBMISSION FEE

1. Author(s) are charged IDR 750,000,- for Indonesian author(s) or 200 US\$ for foreign author(s) for each article accepted for publication. Corresponding authors will get 2 (two) reprints.
2. Colour images page(s) will be charged separately.

#### ADDRESS FOR CORRESPONDENCE

Editorial Board of JPHPI  
Faculty of Fisheries and Marine Science,  
Bogor Agricultural University  
Jln. Agatis, Kampus IPB Darmaga, Bogor  
Indonesia 16680  
Telephone: +62 251 8622915  
Facsimile: +62 251 8622916  
E-mail: [jurnalpengolahan@yahoo.com](mailto:jurnalpengolahan@yahoo.com)  
Website: <http://thp.fpik.ipb.ac.id/>,  
<http://journal.ipb.ac.id/index.php/jphpi>